

Assembling CTFDINPC-2



Place the CTFDINPC-2 as shown below.



Remove the 4 screws.



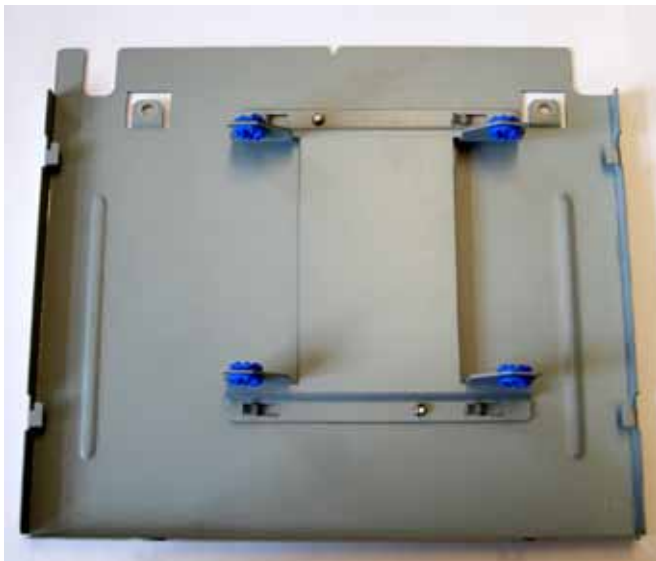


Remove the upper case. (by pulling it towards you)





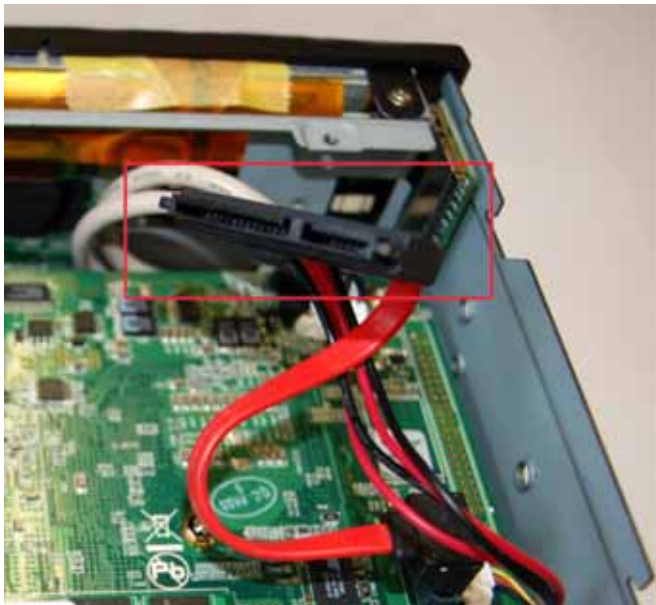
Take your 2.5" HDD/SSD and install it.







You can connect the HDD/SSD with the cable shown below.





Close the lid again and fasten the screws.





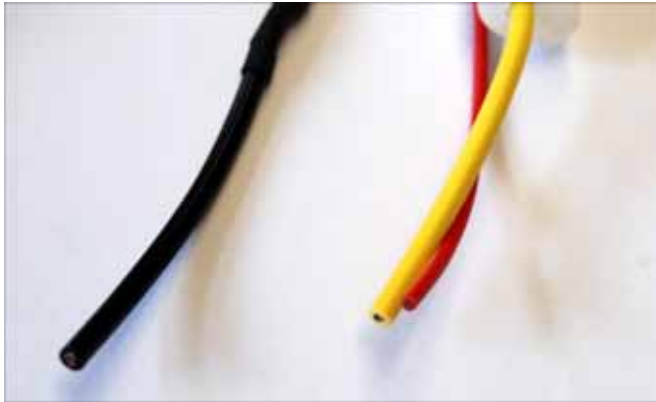


Now connect the cables.





For being able to start CTFDINPC-2 you at least need to connect these 3 wires :



Black = Ground (-)
Yellow = Plus (+)
Red = Ignition plus (ACC +)